

# Reclamation experience in Sweden, challenges and opportunities



Peat Days Latvia 2024-09-05  
Presented by Pia Holmberg,  
vice chairperson of The Swedish Peat Association

Svensk   
**TORV**



# Svensk Torv

## The Swedish Peat Association

**50 members**

**33 peat producers**

Growing media producers

Bedding peat producers

Energy companies

Consultants

Others

- Horticultural peat
- Fuel peat
- Peat for bedding
- Peat for other uses

Close cooperation with TorvForsk,  
the Swedish Peat Research Foundation



Svensk   
**TORV**

# Svensk Torv after-treatment survey 2024

## After-treatment of land in Sweden after finished peat harvest

Collected data covers **48 objects** spread over the country.

The survey covers objects which are after-treated the last 10-15 years.

### Results:

**33 objects** are ready; the after-treatment is completed, and the authorities have approved the return of the areas. The total acreage is **1991 hectares**.

**15 objects** where activities right now is on-going with an acreage of **1252 hectares**.

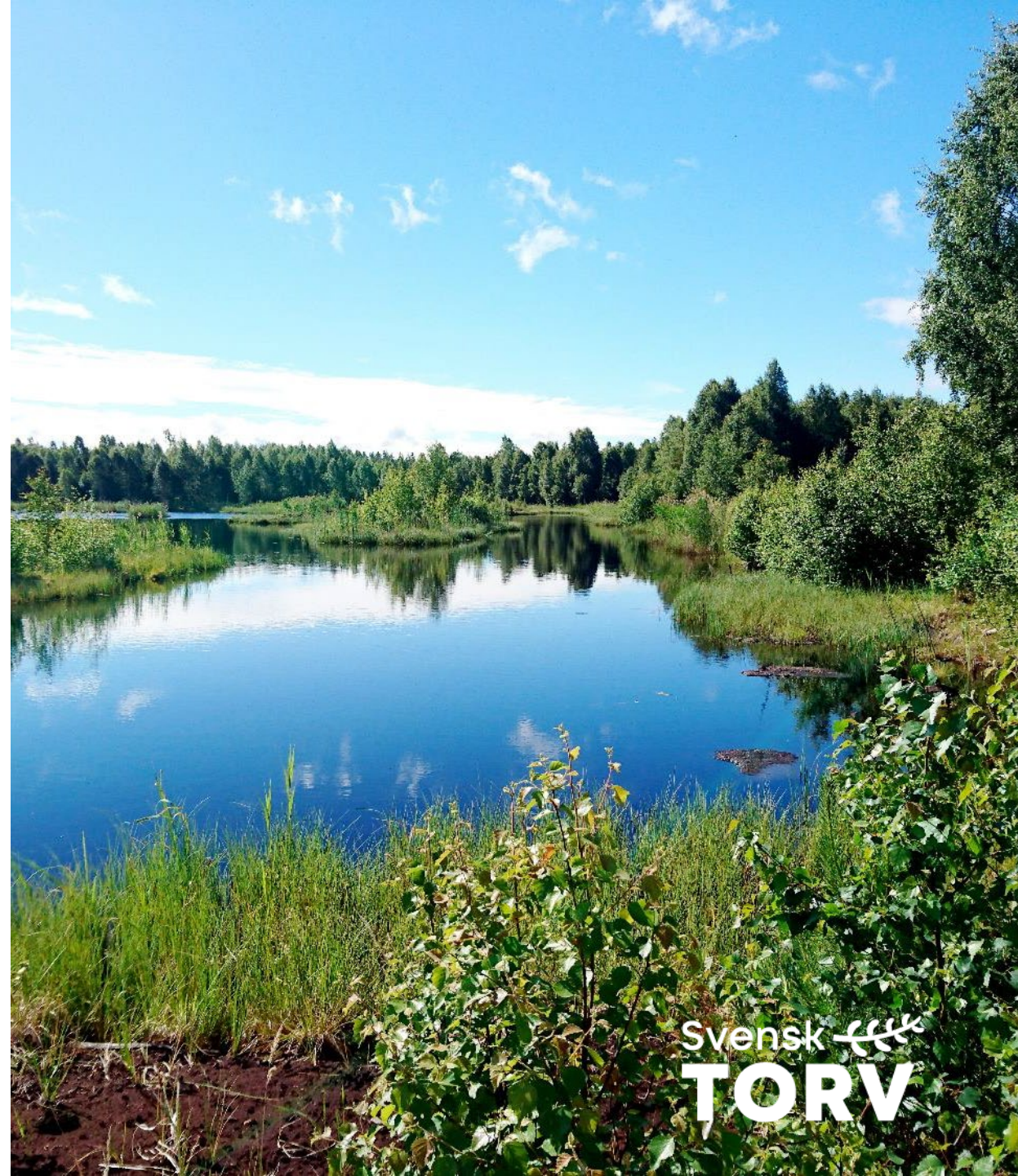
In total almost **3250 hectares**.





# Background

- It is compulsory to have a license for commercial peat harvest.
- Nowadays, the license is granted according to **The Swedish Environmental Code** but earlier there was also a specific **Peat Act** regulating peat extraction for energy use.
- It is a precondition that the land should receive an **after-treatment** when the peat harvest ends.
- **Preliminary after-treatment** plans are stipulated already when the license is granted but the final route for after-treatment is decided in cooperation with landowners, regulatory authorities and other stakeholders before the activities are put in place.



# After-treatment according to Swedish EPA

The **Swedish Environmental Protection Agency (EPA)** guide authorities and operators in the application of the Environmental Code.

EPA provide '**Guidance for extraction activities**' (new version soon to be published).

The guidance states that **ecological after-treatment** is the general and preferred starting point, regardless of what natural values existed on the site before operation began.

**Ecological after-treatment** is done with the aim of benefiting **biological diversity**.



## Towards a better environment

The Swedish Environmental Protection Agency conducts and coordinates Sweden's environmental work. Together with many others, we work to preserve biodiversity, reduce climate impact and contribute to a resource-efficient society.



MENU

TOPICS

**GUIDANCE**

LAWS AND REGULATIONS

SERVICES AND PERMITS

Start > Guidance

## Guidance

The Swedish Environmental Protection Agency's guide authorities and operators in the application of the Environmental Code. We guide also about other issues, such as how monitoring should be conducted.

**EXPLORE**

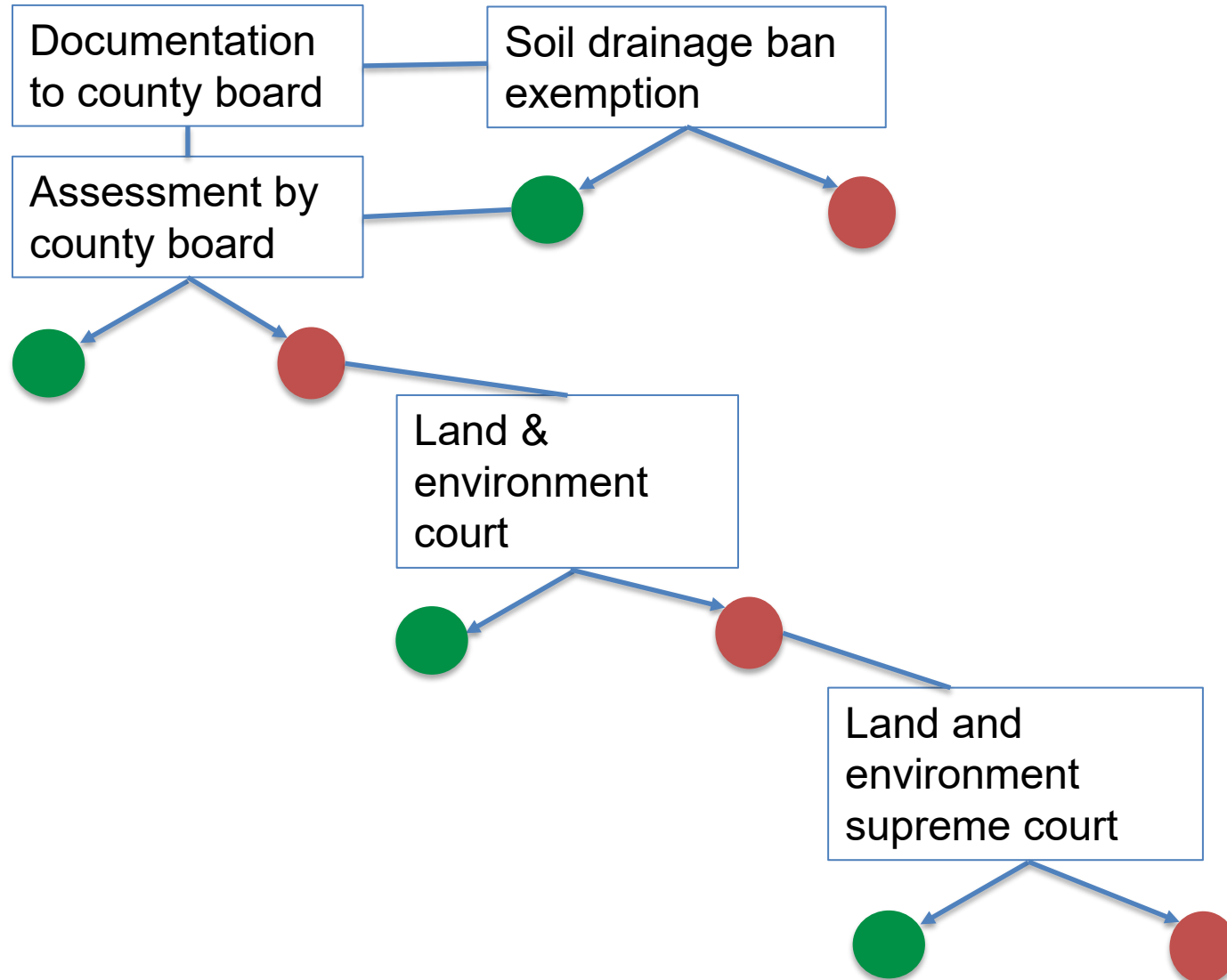
Q SEARCH GUIDANCE

Guidance in environmental work

Svensk   
**TORV**



# The process to get a licence





# Financing and approval

The after-treatment of peat harvesting sites is **completely financed by the companies** and the society does not contribute with any funding in this case.

**After-treatment method is decided** by landowner and the local authorities; county board and municipality.

The after-treatment of harvested peatland is **approved by the local county board** and other local authorities.

There is no proper and comprehensive documentation given by the local authorities covering after-treatment of peat productions areas in Sweden.

The Swedish Environmental Protection Agency funds and reports other wetland restoration activities.



# The two main after-treatment options

## 1. Wetland conditions:

The original hydrological conditions are sought to be established, and the drainage is stopped, leading to the re-establishment of wetland conditions. The land can develop in a way that more or less resembles the conditions before actual area was drained.

## 2. Drainage is maintained:

The other alternative is to keep the drainage system working, so that the area remains drier and may be used for forestry, agriculture or even for building.

Today the direction towards wetland development is the most common route to follow.

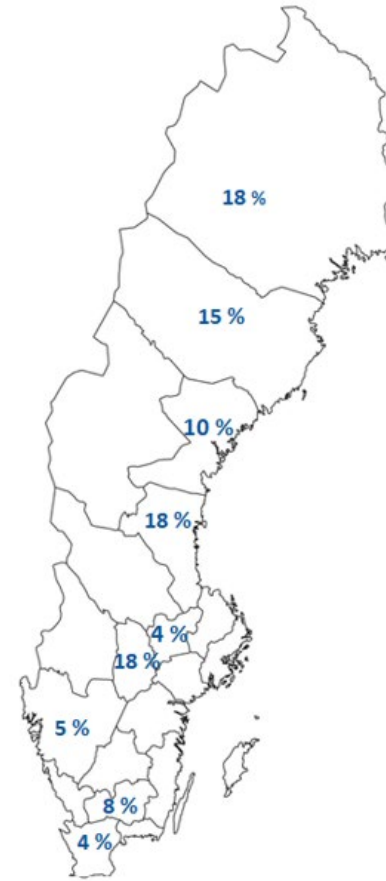




# More results from our survey

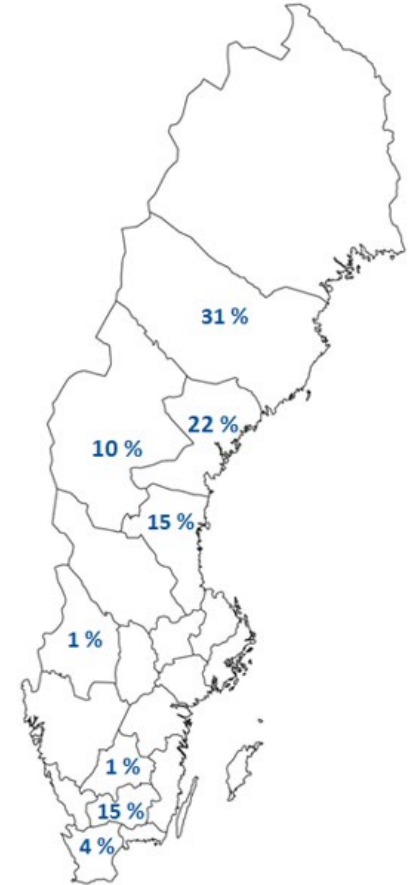
Of the **ready** areas, 1664 hectares have been used for energy peat and 327 hectares for horticultural peat or bedding peat for animals.

Corresponding figures for **on-going** activities is 1102 hectares for energy and 150 hectares for horticultural and bedding peat.



*Figure 1*

Distribution per County of **ready and approved** after-treated site area, in total 1 990 hectare



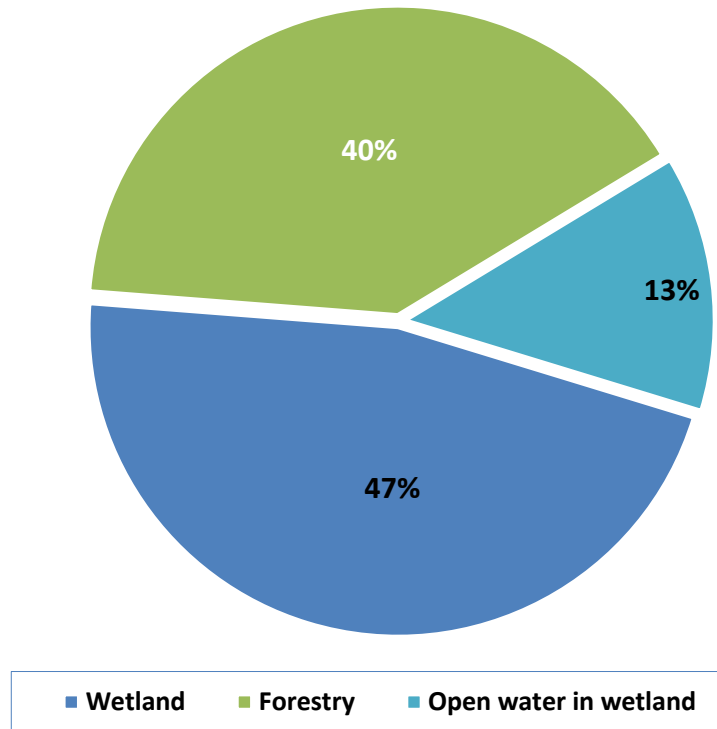
*Figure 2*

Distribution per County of **on-going** after-treatment, in total 1 250 hectare



# After-treatment on approved areas

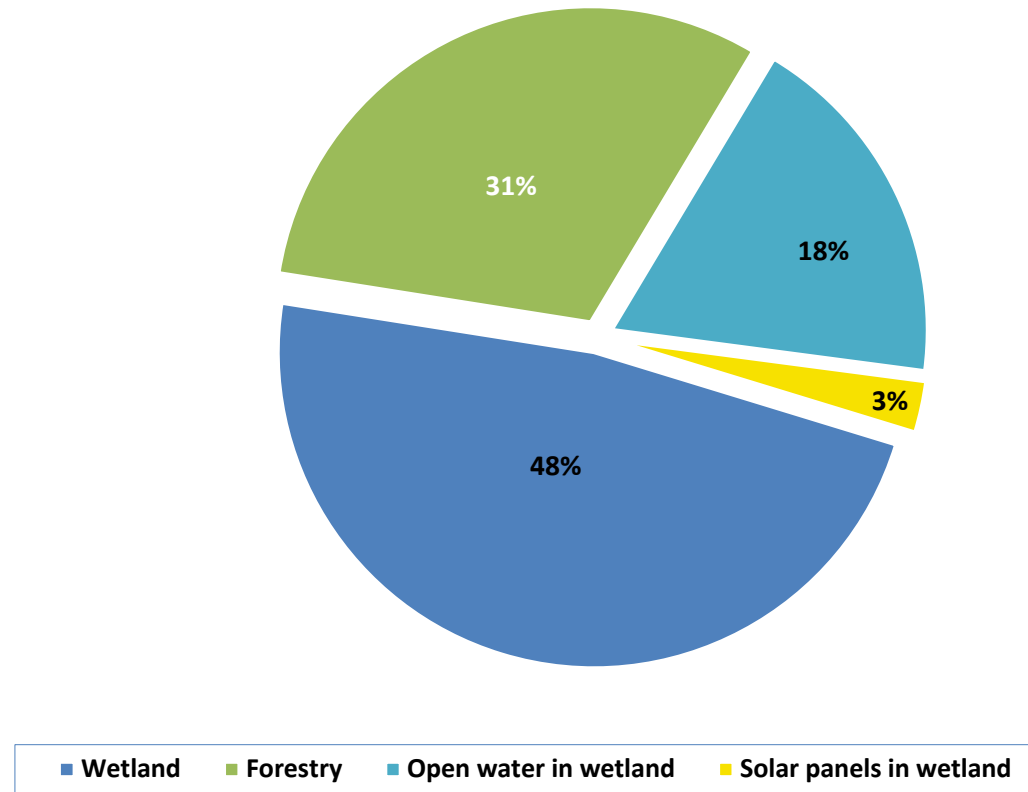
Destination of after-treatment on ready, approved areas





# After-treatment on on-going areas

Destination for on-going after-treatment





# Examples of after-treatment





# Look what's happening in Sweden

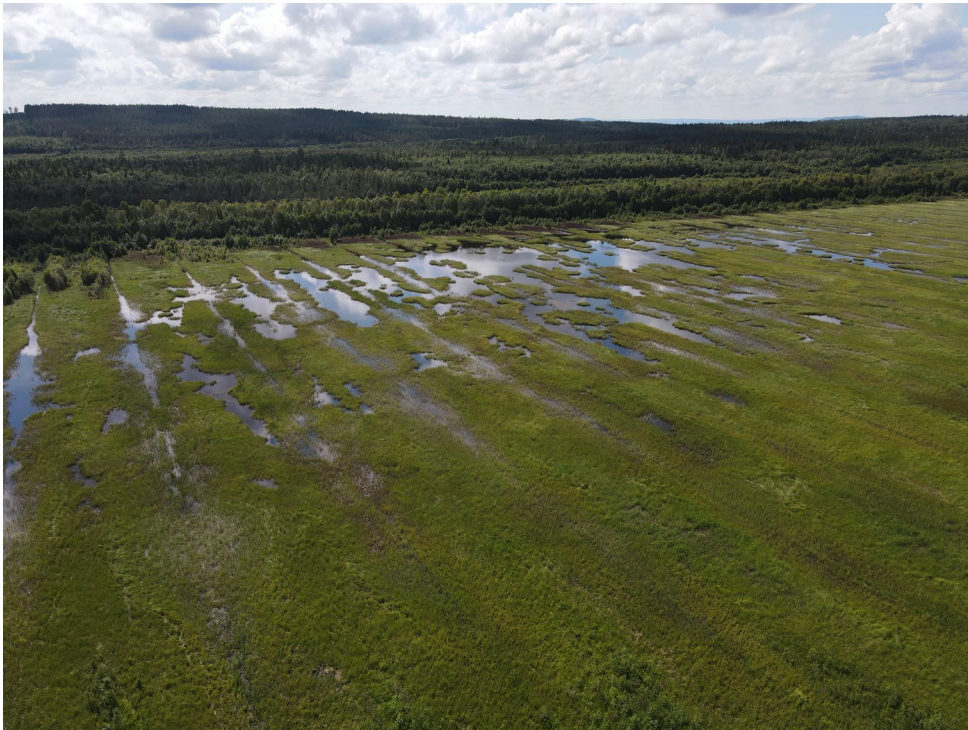
Wetland restoration is preferred by the society.

Governmental funding - 3,7 billion SEK to restore wetlands until 2030. Prio 1 is restoration on forest land.

Activist group 'Återställ våtmarker' has raised awareness by disturbing actions in Stockholm traffic and TV-shows, they are targeting peat production in particular. They get attention in media.

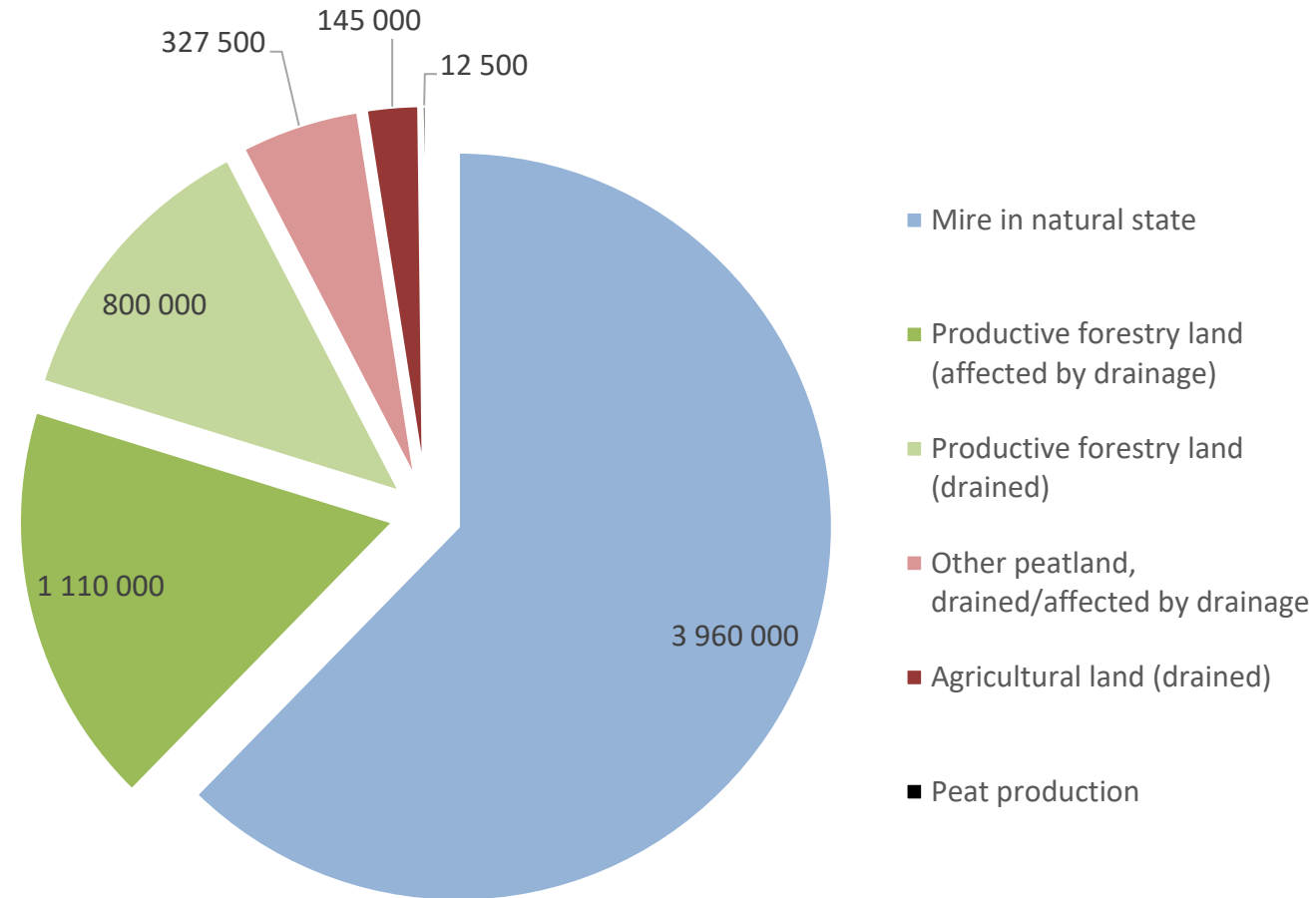
Recently more scientist are highlighting restoration is not as simple as just plugging the ditches.

Solar panel parks – risk for competition on land where peat is suitable for harvesting.





# Peatlands in Sweden



Mire and peatland area and use in Sweden (ha). Total 6 355 000 ha.  
Source: Naturvårdsverket 2016

# Thank you!

If you would like to contact us please use this email:

[info@svensktorv.se](mailto:info@svensktorv.se)

Visit our website where you also can find the survey presented:

[svensktorv.se](http://svensktorv.se)